

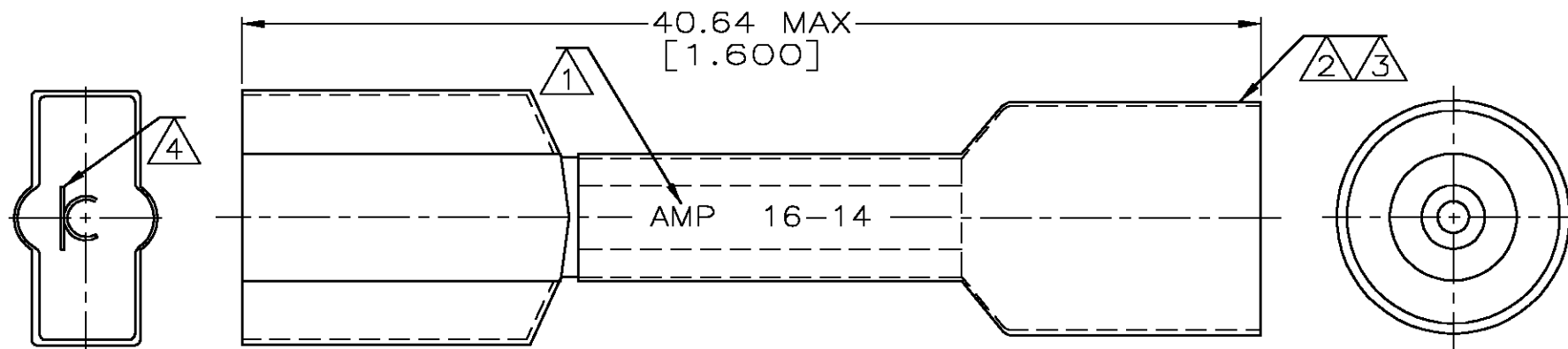
THIS DRAWING IS UNPUBLISHED. RELEASED FOR PUBLICATION ,19

© COPYRIGHT 19 BY AMP INCORPORATED. ALL INTERNATIONAL RIGHTS RESERVED.

LOC	DIST	P	F	ZONE	LTR	DESCRIPTION	DATE	APPD
G	14				C	REV PER 0G3A-0001-03	07JAN03	JR TM

AMP
WIRE RANGE

16-14 AWG
SOLID OR STRANDED



NOTES:

- ① STAMP AMP 16-14 APPROX AS SHOWN
- ② SEALANT THROUGHOUT SHRINKABLE INSULATION
- ③ HEAT SHRINKABLE TUBING MAY BE IRREGULAR IN SHAPE
- ④ TAB FOR 6.35 X 0.81mm [.250 X .032] SERIES FASTON RECEPTACLE

<p>AMP INCORPORATED CUSTOMER SERVICE SYSTEMS</p>		<p>MAX RECOMMENDED OPERATING TEMPERATURE: -55° C TO 125° C</p>	<p>DO NOT SCALE PRINT. UNLESS SPECIFIED DIMENSIONS IN mm [INCHES] TOLERANCES ON: 2 PLC DEC ± 0.20[.008] 3 PLC DEC ± - ANGLES ± -</p>	25	LOOSE PIECE	8-55888-3
				1000	LOOSE PIECE	55888-1
<p>FOR ADDITIONAL PRODUCT INFORMATION OR COPIES OF DRAWINGS AND TECHNICAL DOCUMENTS</p>		<p>PRODUCT INFORMATION CENTER 1-800-522-6752</p>	<p>MATERIAL BODY: ETP COPPER INSULATION: POLYOLEFIN TRANSLUCENT COLOR: NYLON BLUE</p>	QTY	PACKAGE TYPE	PART NO
<p>FOR APPLICATION TOOLING INFORMATION</p>		<p>TOOLING ASSISTANCE CENTER 1-800-722-1111</p>		<p>FINISH EDP TIN PLATED</p>	<p>DR 6/93 S S GOULDEN CHK 6/93 R HERSEY APPD 6/93 B BARE APPD 6/93 M ELLIS PRODUCT SPEC - APPLICATION SPEC - WEIGHT -</p>	<p>AMP AMP Incorporated Harrisburg, PA 17105-3608</p> <p>NAME PRE-INSULATED FASTON TAB ASSEMBLY 250 SERIES, HEAT SHRINKABLE SEALABLE SLEEVE</p>
<p>FOR ORDER ENTRY</p>		<p>1-800-526-5142</p>	<p>THIS DRAWING IS A CONTROLLED DOCUMENT FOR AMP INCORPORATED. IT IS SUBJECT TO CHANGE AND THE CONTROLLING ENGINEERING ORGANIZATION SHOULD BE CONTACTED FOR THE LATEST REVISION.</p>	SIZE	CAGE CODE	DRAWING NO
				<p>SCALE 4:1</p>	<p>B 00779</p>	<p>C-55888</p>